

# Ensuring excellence in your on-site procedures

**MONOCAST is designed to improve your on-site processes by enabling fast work, reducing the requirement for skilled labour and minimising adjustments through precise advance planning and sophisticated engineering.**

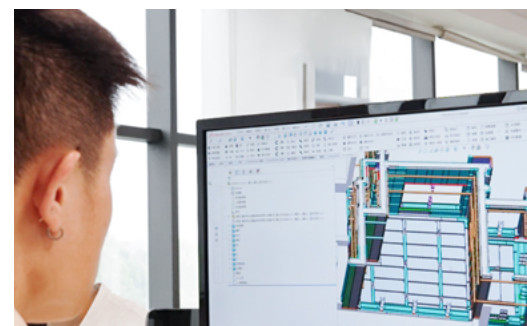


### Engineered for speed

Sophisticated system characteristics simplify assembly. When you choose MONOCAST, you are choosing an excellently engineered system. Its built-in ribs and robust panels, requiring fewer tie levels than usual, will make handling and work processes easy and fast throughout your projects.

### Built to last

Fully-extruded panels enhance durability. Highly durable components and an innovative system design enable you to reuse the standard system parts multiple times in numerous projects, saving reinvestment costs and boosting your project efficiency.



### Precisely planned to perform

Pure precision in planning enhances efficiency and reduces errors on site. AI-assisted intelligent digital mock-ups enable precise planning and visualisation before arrival at the construction site. This results in more accurate formwork, significantly reducing errors during execution. The high level of precision minimises on-site assembly errors.

### Support for construction excellence

On-site support from our PERI experts ensures smooth and precise project execution. Our product specialists provide technical support and assist your team on site to ensure efficient, reliable execution. Additionally, a smart color-coding system with intuitive stickers on each panel simplifies component identification and speeds up assembly on site.



# One pour – various applications

### Low-rise and mid-rise projects

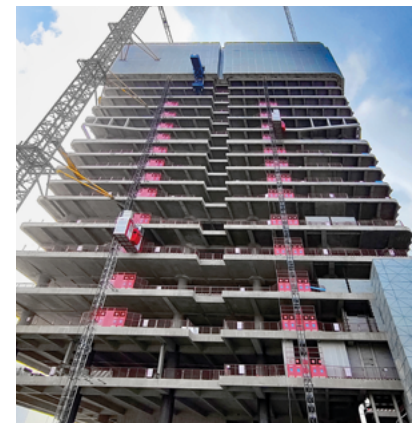
From low-rise buildings to efficient mid-rise buildings, MONOCAST delivers strength, speed, and precision in every project. Engineered for versatility, it adapts seamlessly to different architectural styles and structural requirements, enabling fast construction timelines without compromising on quality. The result: durable, high-performance spaces that meet the demands of modern living.



Woodlands, Singapore



Hulhumalé, Maldives



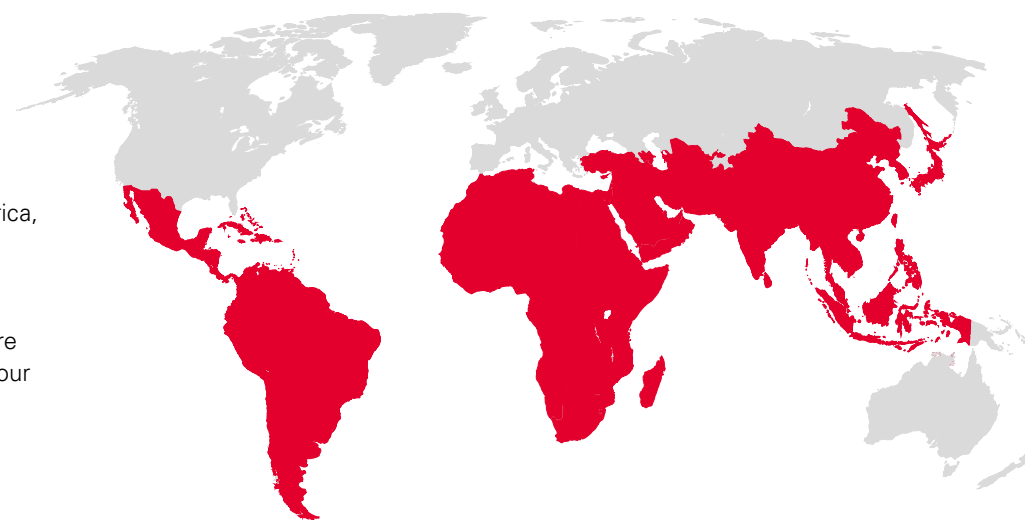
WYN residence, Malaysia

### High-rise projects

For high-rise developments, MONOCAST combines structural integrity with construction efficiency at scale. Designed to meet the demanding requirements of tall buildings, it delivers precise, consistent quality floor after floor – reducing build times while ensuring long-term durability and safety. The result is a faster path from blueprint to skyline.

# The world is our playground

As a true global player, PERI is at home wherever your projects take you – and is always within reach. MONOCAST is available across vast regions of the Middle East, Africa, Asia, and Latin America, and our PERI Experts are always close by. When you choose our system, you gain more than innovative technology – you secure a reliable partner, committed to your success, anywhere in the world.



# CHANGING THE MONOLITHIC GAME – TO EXCELLENCE

MONOCAST Monolithic Formwork



VIDEO

Watch the video now



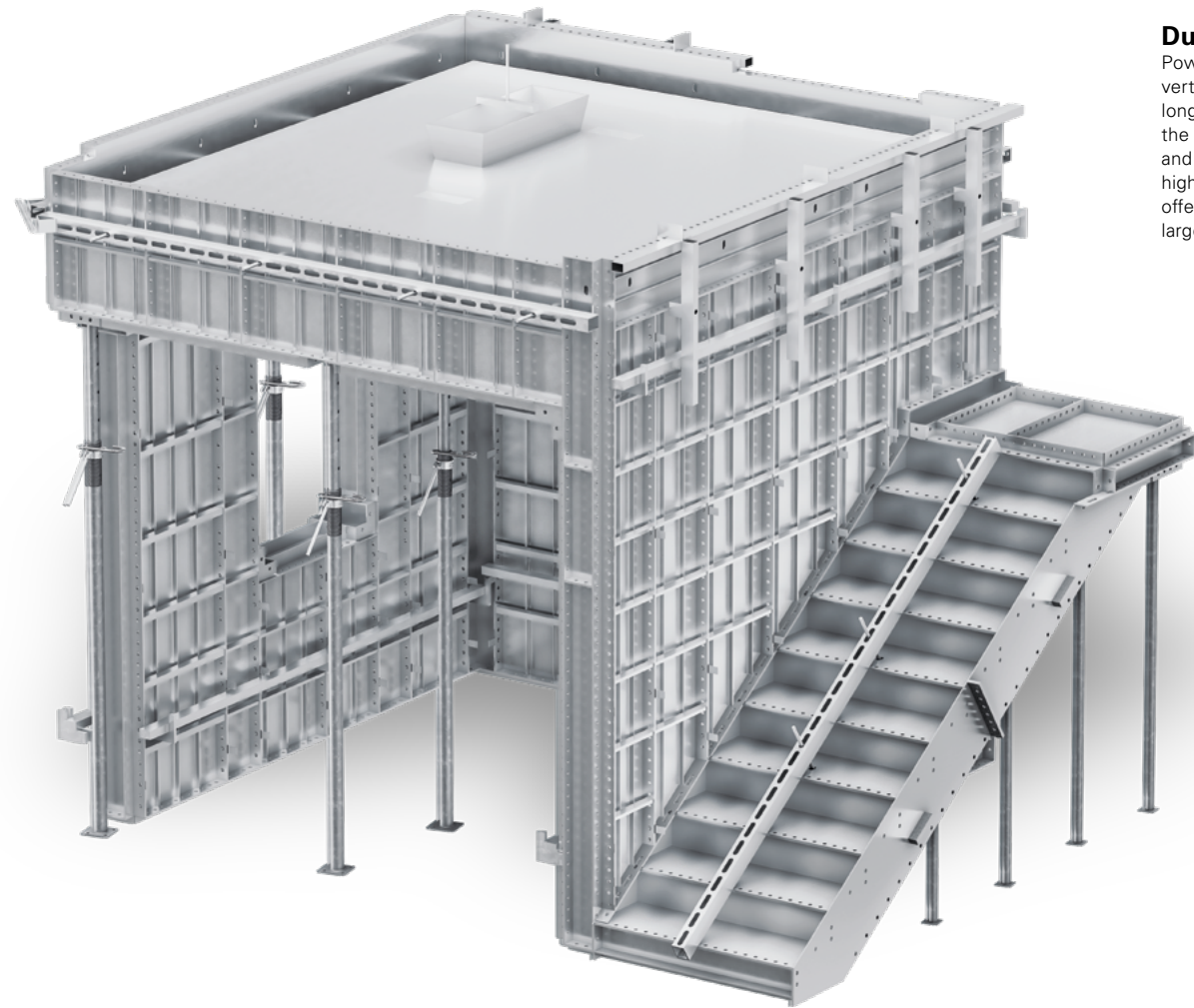
# MONOCAST Monolithic Formwork

**One pour, pure precision.** With MONOCAST, PERI is not simply joining the monolithic game – we're changing it. Our state-of-the-art aluminium formwork system is ready to set a new benchmark, redefining durability, speed and simplicity in construction. We took our time so you don't have to – now it's your turn to build smarter.

With its innovative panel design and flat tie system, MONOCAST enables simultaneous casting of walls, columns, slabs, beams, and stairways in one go. This results in shortened timelines, fewer resources, and enhanced flexibility on-site.

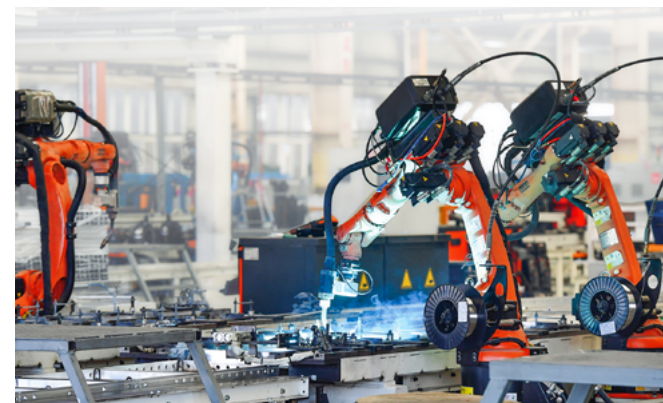
Crafted from lightweight aluminium, the system eliminates the need for cranes, making assembly quick and effortless. The snap tie system removes the hassle of covering accessories and grouting, streamlining your workflow from start to finish.

Whether you're a seasoned pro or new to the construction site, MONOCAST is intuitive and easy to use – delivering professional results with minimal training requirements.



## High-speed production

Automatic production lines have a production capacity of 20,000 m<sup>2</sup> per day, enabling standardised and high-speed manufacturing that ensures fast delivery to construction sites.



Manually handled system with weight varying from 22 – 24 kg/m<sup>2</sup>

Designed for 60 kN/m<sup>2</sup> concrete pressure

6 levels of snap ties for floor heights up to 3.3 m

Standard panel height of up to 3.0 m possible, as per customer requirements

## Your benefits

### Durable

Powder-coated, fully extruded panels with vertical ribs make the system highly robust and long-lasting. The powder coated surface makes the de-shuttering process easier, saving time and increasing overall durability. Thanks to the high degree of reusability, MONOCAST panels offer significant cost savings – especially in large-scale residential construction projects.



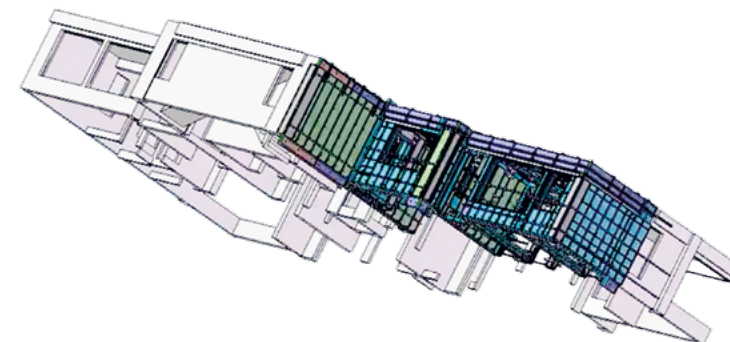
### Fast

The system enables rapid installation, featuring ergonomic, easy-to-grab handles and a smart snap-tie mechanism that accelerates assembly and eliminates the need for grouting altogether. Thanks to the early striking mechanism for the slab, fast construction cycles can be achieved.



### Precise

Our expert design team creates versatile solutions for a wide range of building types, enabling design flexibility. The precision of our formwork reduces the need for on-site formwork adjustments. Reduced dispatch and initial setup times are further supported by an AI-assisted virtual mock-up, streamlining the entire process.



### Innovative flat tie solution

Flat snap ties enable quick and efficient assembly, simplifying the construction process. After concreting, they can be easily broken off 10 mm inside the concrete surface, eliminating the need for grouting.



### Maximum use of standard panels

Most wall panels are standard panels, ensuring consistency across projects. MONOCAST is the ideal solution for straightforward construction site processes.

## Product advantages at a glance



### Robust and crane-free

Easy manual handling, no crane needed (weight 22 – 24 kg/m<sup>2</sup>)

### Reliable quality

Robust system design with fewer tie points and powder-coated panels ensures high performance and smooth concrete finish

### Cost-effective

Improved cost-efficiency due to shorter cycle times and maximum reuse of standard panels across multiple projects

### Sustainable and recyclable

The aluminium cycle: melt, remake, and recycle for high reusability

### Quick assembly

Swift assembly processes for streamlined workflows

### Digital and accurate

Reduced execution errors, thanks to AI-assisted virtual mock-ups

### Fully extruded panels

Single extruded panels made from high-strength 6061 grade aluminium with vertical ribs enhance robustness and ensure a longer system service life.

